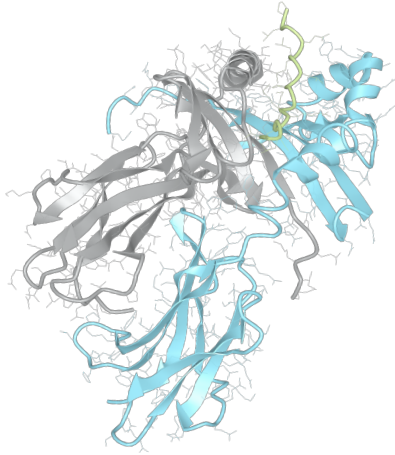


# Product datasheet



## sHLA- DRB1\*14:02 DRA\*01:01

DRB1\*1402, DRB11402, DRB1\*14, DRB14, DR14  
DRA\*0101, DRA0101, DRA\*01, DRA01

<b>Serological Name</b>	DR14
<b>Peptide Load</b>	Endogenous
<b>Modification</b>	Unmodified
<b>Conjugation</b>	Unconjugated
<b>SKU</b>	DRB11402

### Product Description

<b>Allele Name</b>	DRA*01:01 DRB1*14:02
<b>HLA Class</b>	HLA Class II
<b>HLA Gene Locus</b>	HLA-DR
<b>Alternative Allele Name A Chain</b>	DRA*0101, DRA0101, DRA*01, DRA01
<b>Alternative Allele Name B Chain</b>	DRB1*1402, DRB11402, DRB1*14, DRB14, DR14
<b>Description</b>	Recombinant, truncated Class II soluble Human Leukocyte Antigen (sHLA), naturally folded and glycosylated, loaded with endogenous peptides.
<b>Serological Name</b>	DR14
<b>Serological Split</b>	DR6
<b>Allele Frequency [World Population]</b>	
<b>A chain</b>	-
<b>B chain</b>	5.9%

### Associated products

[DRB11402bio](#)  
[DRB11402pe](#)

## Product Specification

<b>Product name</b>	HLA-DRB1*14:02
<b>HLA Species</b>	Human
<b>Host Cell Line Species</b>	Mouse
<b>Clone Designation</b>	EP536-SSC E3
<b>Tail Specification</b>	ZP
<b>Peptide Load</b>	Endogenous
<b>Modification</b>	Unmodified
<b>Conjugation</b>	Unconjugated
<b>Complexity</b>	Monomer
<b>Protein Format</b>	Recombinant, truncated, zipper-stabilized, soluble, non-modified, non-labeled, endogenously loaded
<b>Storage Temperature</b>	4°C (This product should be stored undiluted)
<b>Form</b>	Liquid
<b>Concentration</b>	1000.0 µg/ml
<b>Formulation</b>	PBS/0.02% Sodium Azide
<b>pH</b>	7.4
<b>Purification Method</b>	Affinity Chromatography
<b>Grade</b>	Research Use Only [RUO]
<b>Authentication Verification</b>	Sequence Based Typing

## Protein Sequences

<b>Alpha Chain Sequence</b>	<p>IKEEHVIIQA EFYLNPDQSG EFMDFDGDGE IFHVDMASSE TVWRLEEFGR FASFEAQGAL            ANIAVDKANL EIMTKRSNYT PITNVPPEVT VLTNSPVELR EPNVLICFID KFTPPVVNVV            WLRNGKPVTT GVSETVFLPR EDHLFRKFHY LPFLPSTEDV YDCRVEHWGL DEPLLKHWEF            DAPSPLPETT EVDGGGGGAQ LEKELQALEK ENAQLEWELQ ALEKELAQ</p>
<b>Beta Chain Sequence</b>	<p>GDTRPRFLEY STSECHFFNG TERVRFLERY FHNQEENVRF DSDVGEYRAV TELGRPDAEY            WNSQKDLLEQ RRAAVDTYCR HNYGVGESFT VQRRVHPKVT VYPSKTQPLQ HHNLLVCSVS            GFYPGSIEVR WFRNGQEEKT GVVSTGLIHN GDWTFQTLVM LETVPRSGEV YTCQVEHPSV            TSPLTVEWRA RSESAQSKVD GGGGGAQLKK KLQALKKKNA QLKWKLQALK KKLAQ</p>

## Related Products

[DRB11401](#)  
[DRB11454](#)  
[DRB11101](#)  
[DRB11501](#)

## Applications

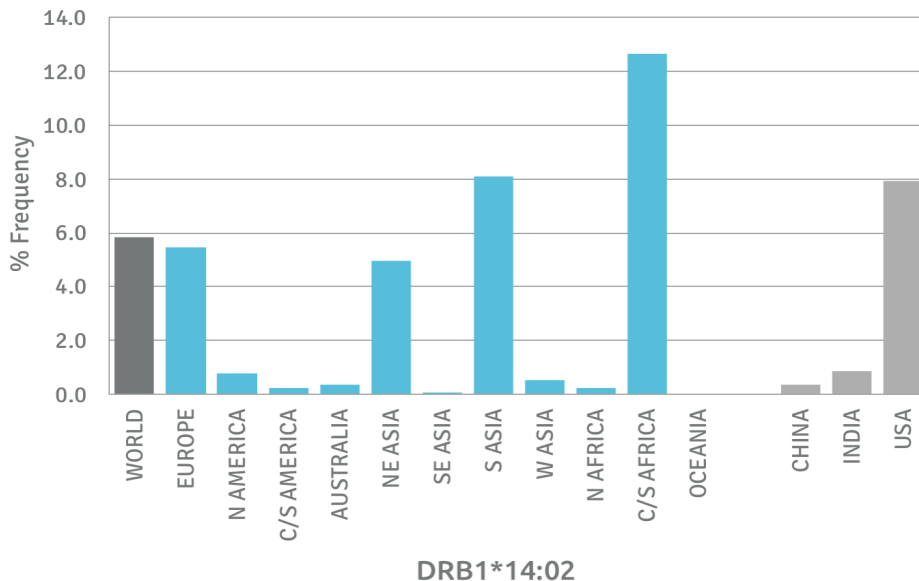
HLA Sandwich ELISAs  
 HLA Direct ELISAs  
 HLA-Sera Antibody Assays  
 HLA Controls in ELISA Assays  
 HLA Assay Standards  
 HLA Blocking Assays  
 HLA Neutralizing Assays  
 HLA Competition Assays  
 HLA Bead Assays  
 HLA Immunization Procedures

## Recommended Antibodies

L243

## Allele Frequency

### Worldwide Allele Frequency



Please note:

ALL PRODUCTS ARE FOR RESEARCH USE ONLY. NOT FOR COMMERCIAL USE IN DIAGNOSTIC PROCEDURES.  
 For more information, please visit our Policies section on our website. For licensing inquiries, please contact

[licensing@hlaprotein.com](mailto:licensing@hlaprotein.com)

HLA Protein  
 PURE PROTEIN LLC

